



TOUCH II

User friendly and totally programmable 7" Touch II USB Connection. Online platform free of charge for programming, telemetry, data analysis...thanks to the IoT
Videos on display (ads, instructions, etc.)
37 languages



OUTSTANDING FEATURES

Reversing drum action as standard
Frequency inverter as standard.



EFFICIENCY

DOUBLE FLOW - mixed axial-radial airflow
Big fluff filter



VERSATILITY

Make to order - customization
WET CLEANING
OPL > Multi-vending - Standard OPL model easily to convert to coin laundry uses



CONNECTIVITY

IoT- DomusKonnnect Standard
Management of laundries: OPL and COIN
Remote payment (coin-laundry)



ERGONOMICS

Lint drawer filter, stainless steel mesh
Large door diameters



MAINTENANCE

Hinged control panel for easy access



OTHERS

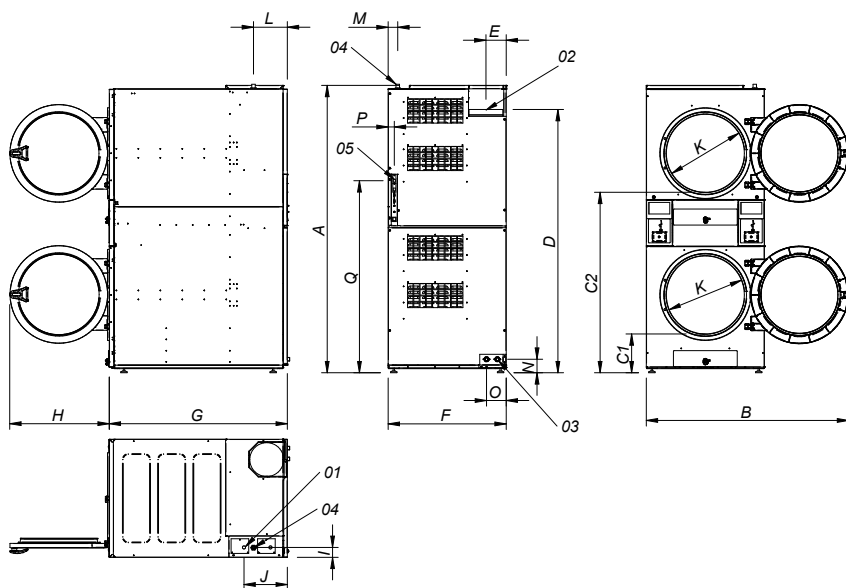
Grey skinplate outer casing, stainless steel look
SOFT DRY - new drum with stamped holes
COOL DOWN - anti-wrinkle at the end of the cycle
Heating options: electric, gas
CE approved



OPTIONS

- EFFICIENT DRY - Intelligent humidity control. Temperature probe at drum inlet.
- Double door glass
- SFEX - Integrated Fire Extinguishing System
- Tropicalized model
- Opposite door opening
- Dosing-spraying
- Back panel external air + filter
- Fluff filter with grid 0.01 In (standard in STACK is 0.02 In)
- Stainless steel front and side panels
- Frontal panel in stainless steel
- Maritime wooden packing
- Ship voltage for electric models: 440V 3 PH 50/60 Hz No neutral
- Other voltages available

TECHNICAL DATA	UNIT.	UDTT2-50
CAPACITY		
Capacity 1/18	ln	55 X 2
Capacity 1/20	ln	50 X 2
Hourly Output (gas)	Lb/h	194
Evaporation capacity (gas)	l/h	44
DRUM		
Ø Drum	ln	32.87
Ø Door	ln	22.59
Door center height	ln	21.6/63.7
Door bottom height	ln	10.70 / 52.04
Drum Depth	ln	31.49
Drum volume	cu ft	15.49
POWER		
Drum motor power	Hp	0.5 x 2
Fan motor power	Hp	0.7 x 2
Electric heating power	kW	-
Total electric power (elec.model)	kW	-
Gas heating power	Btu/h	102364 x 2
Instant propane gas consumption (G31)	kg/h	1.03 x 2
Instant natural gas consumption (G20)	m3/h	1.27 x 2
Total electric power (gas model)	kW	1.94
CONNECTIONS		
Voltage 230V - 1 PH + N + G	Nº x mm2 / A	3 x 1.5 / 20A
Voltage 230V - 3 PH + G	Nº x mm2 / A	-
Voltage 400V -3 PH + N + G	Nº x mm2 / A	-
Ø Gas inlet	BSP	3/4"
DIMENSIONS / PACKING DIMENSIONS		
Net width / Gross width	ln	34.2/37.4
Net Depth / Gross Depth	ln	50.25/55.6
Net Height / Gross Height	ln	81.75/88.7
Net weight / Gross weight	Lb	824.7/868.8
OTHERS		
Max airflow	cfm	529.7x2
Ø Vent Exhaust	ln	10
Sound level	dB	69



- 01 ELECTRIC CONNECTION
- 02 FUMES OUTLET Ø250
- 03 2 SPRINKLER VALVES 3/4"
- 04 GAS INLET 3/4
- 05 ETHERNET CONNECTION (only available CONTROL TOUCH II models)

	A	B	C1	C2	D	E	F	G	H	I	J	K	L	M	N	O	P	Q
UDTT2-50	2118	1490	286	1330	1940	149	870	1312	735	73	320	575	250	70	100	145	45	1416

* Measurement with legs mounted 1.18 ln)